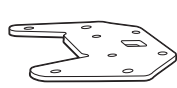


SHAD

YAMAHA MT 03 '21 TOP MASTER YOMT31ST



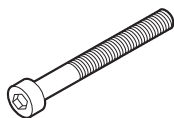
1 262723 x1



2 260641 x2
Ø16 Ø9 x 22



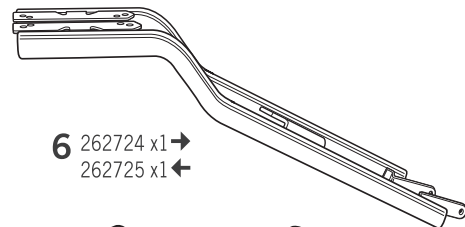
3 260596 x2
Ø16 Ø9 x 20



4 304178 x4
M6 x 60 Din 912



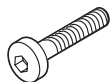
5 303017 x8
Ø6



6 262724 x1 →
262725 x1 ←



7 302021 x4
M6



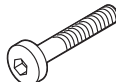
8 304053 x4
M8 x 30 Din 7380



9 303045 x8
Ø8



10 302024 x4
M8



11 304039 x4
M8 x 40 Din 7380



12 303020 x4
Ø8



13 260648 x2
Ø16 Ø9 x 5



WARNING!

GB Do not fully tighten the screws until it is ensured that the KIT is correctly attached and aligned.

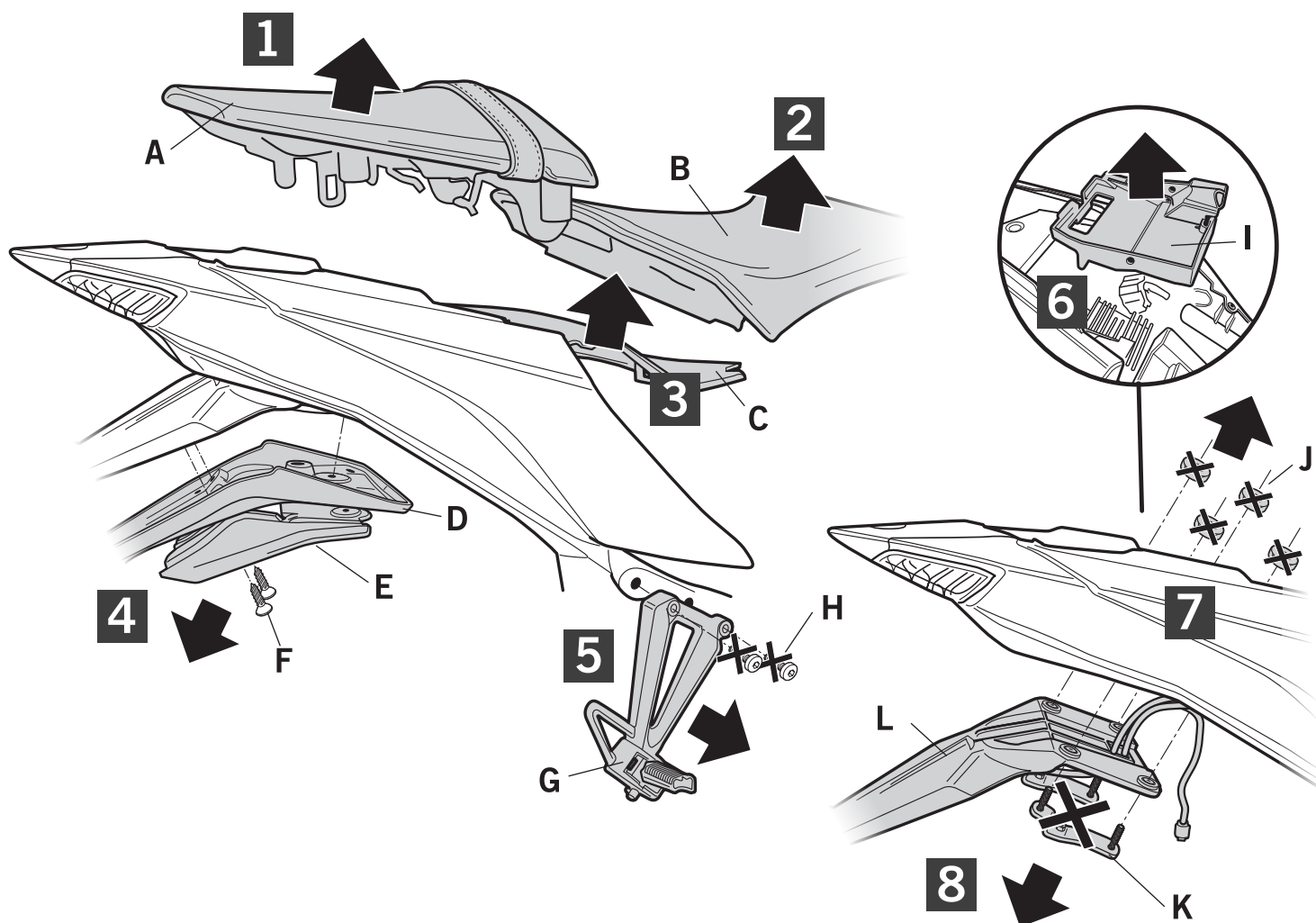
E No apretar los tornillos del todo hasta asegurarse que el KIT está correctamente colocado y alineado.

D Ziehen Sie die Schrauben nicht ganz fest, bevor Sie sich nicht vergewissert haben, daß der Bausatz korrekt eingestellt und ausgerichtet ist.

I Non stringere del tutto le viti fin tanto non si è sicuri che il kit è collocato correttamente e allineato.

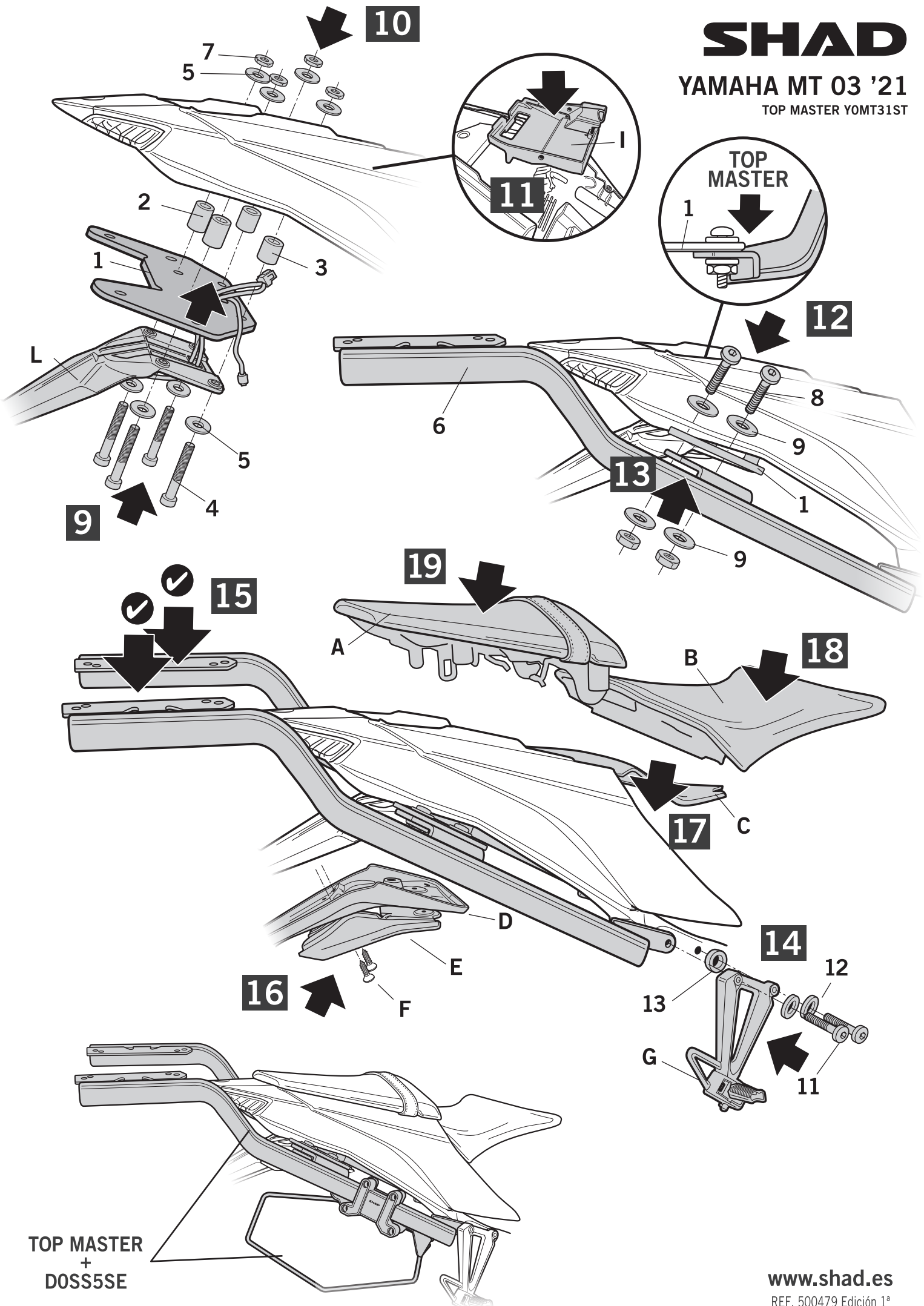
F Ne pas serrer les vis avant d'être sûr que le KIT soit correctement positionné et ajusté.

ATTENTION: For a complete set of equipment, mount the TOP bracket under the stand (1).



SHAD

YAMAHA MT 03 '21
TOP MASTER YOMT31ST



TOP MASTER
+
DOSS5SE